



For Sale
Development Site in Limerick Twp, PA
67 Lightcap Rd
Pottstown, PA

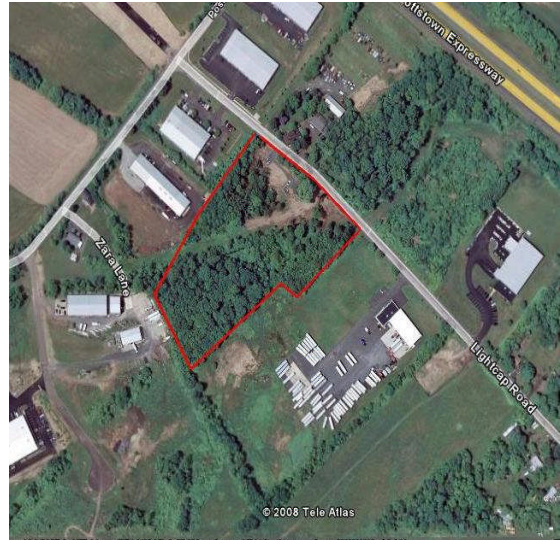
Keller Williams Realty
Commercial Real Estate
810 Oak Street
Royersford, PA 19468
Cell 610-551-5830
Office 610-792-5900

Location : Walking distance to the new Philadelphia Premium Outlets in Limerick Twp, PA

Lot Size : +/- 6.34 Acres with 2,864 SF residence

Current Zoning : Office/Light Industrial (OLI)

Real Estate Taxes : \$4,799/2008



This 6.34 acre development site is .2 miles from new Philadelphia Outlet Mall in Limerick Twp, PA. Zoned Office / Light Industrial (OLI). Permitted uses AS OF RIGHT include manufacturing and distribution of materials, offices, corporate headquarters, administrative centers, industrial research & engineering centers, and daycare centers. Conditional uses include financial institutions, retail stores, restaurants, medical & dental offices, hotels and large scale recreational facilities. Call agent for more details.

Joe Leone
Associate Broker
Cell 610-551-5830
Office 610-792-5900
jfleone@hotmail.com
www.ListWithSanta.com



Asking Price : \$950,000