



For Sale / For Lease
Development Site in Reading, PA
Allentown Pike (Rte 222) & E Hullers Ave
Reading, PA

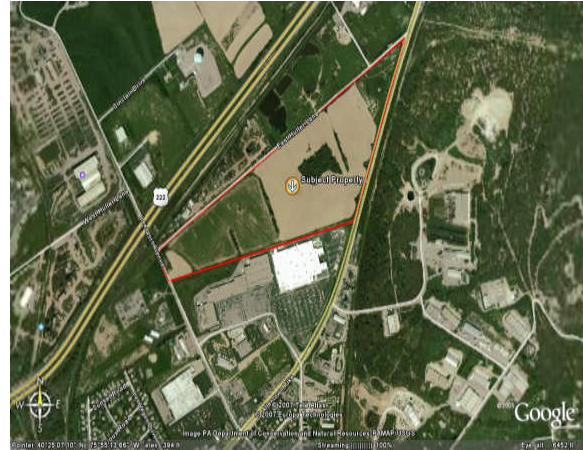
Keller Williams Realty
Commercial Real Estate
542 Lewis Rd
Limerick, PA 19468
Cell 610-551-5830
Office 610-792-5900

Location : Centrally located in Berks County, PA. Property fronts on both Allentown Pike (Bus Rte 222) & Leesport Ave, Reading, PA

Lot Size : +/- 51.89 Acres

Current Zoning :
C-2 (Shopping Center District)
G-I (General Industrial)

Real Estate Taxes : \$1,113 / 2007



Property Description: +/- 51.89 acre multi-use property located in Muhlenberg and Ontelaunee Townships, Berks County, PA. Strategically located with access from both Business Route 222 (Allentown Pike) and Leesport Ave. Property located near Wal-Mart Super Center, Sam's Club and new Target Super Center on Business Route 222. Ontelaunee zoning is G-I (General Industrial) and C-2 (Shopping Center District). Muhlenberg zoning is L-1 (Limited Industrial). Permitted uses by right consist of retail establishments, restaurants, all automotive related businesses, office buildings, research laboratory, manufacturing, warehousing, distribution, financial institutions, health & fitness center, mini storage, heavy commercial or industrial uses. Bring your ideas. Contact listing agent for additional conditional uses. Owner will consider subdividing parcel. Minutes from Route 222, Route 61 and I-78.

Joe Leone
Associate Broker
Cell 610-551-5830
Office 610-792-5900
jfleone@hotmail.com
www.ListWithSanta.com



Asking Price : \$1,500,000