



For Sale
Multi-unit buildings
in Bucks County, PA
1312/1316 W. Broad Street
Quakertown, PA

Keller Williams Realty
Commercial Real Estate
542 Lewis Rd
Limerick, PA 19468
Cell 610-551-5830
Office 610-792-5900

Location : Centrally located
on West Broad St 2 blocks East of
Route 309 in Quakertown, PA

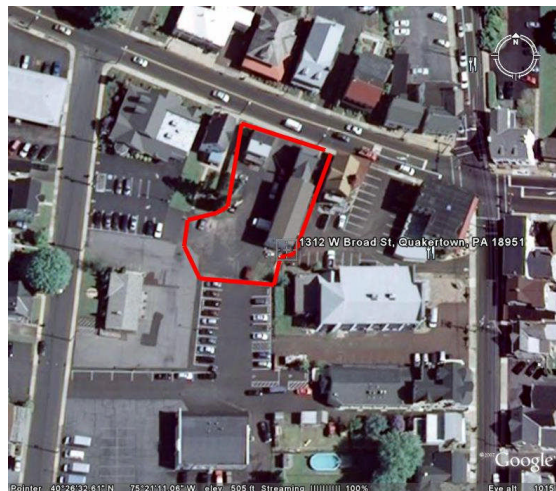
Property Type: Mixed Use

Lot Size : +/- .3 Acres

Current Zoning : NC

Neighborhood Commercial

Real Estate Taxes : \$4072/2009



Unique multi unit property PRICE REDUCED TO SELL!!!! Two buildings with a total of 5 rental units on two lots. Building #1 consists of 4 units. Front of building storefront is occupied with long term tenant (appliance parts and repair shop), above the storefront is 1 bedroom apartment. The rear of this main building contains a 60ft x 24 ft warehouse with mezzanine (2000sf total). Warehouse features 3 large garage bays with 2 motorized doors and large parking lot. Above warehouse is 1400sf open floor plan which could be converted into office space for warehouse below or separate 2nd floor apartment. Warehouse is ideal for plumbing contractor or other skilled tradesman. Building #2 consists of storefront and 2nd floor 2 bedroom apartment (900 SF total), both occupied by Computer repair business. Zoned Neighborhood Commercial (NC) allows many uses to numerous to mention. Go to www.ListWithSanta.com to access NC permitted uses. Centrally located on West Broad St 2 blocks east of Route 309. Easy access to PA Turnpike Northeast Extension, I-78 and Route 309. LA and/or owner must accompany all showings.

Joe Leone

Associate Broker
Cell 610-551-5830
Office 610-792-5900
jfleone@hotmail.com
www.ListWithSanta.com



Asking Price : \$449,000