



For Sale
Development Site in Berks County, PA
27 Toll Gate Rd
Douglasville, PA

Keller Williams Realty
Commercial Real Estate
542 Lewis Rd
Limerick, PA 19468
Cell 610-551-5830
Office 610-792-5900

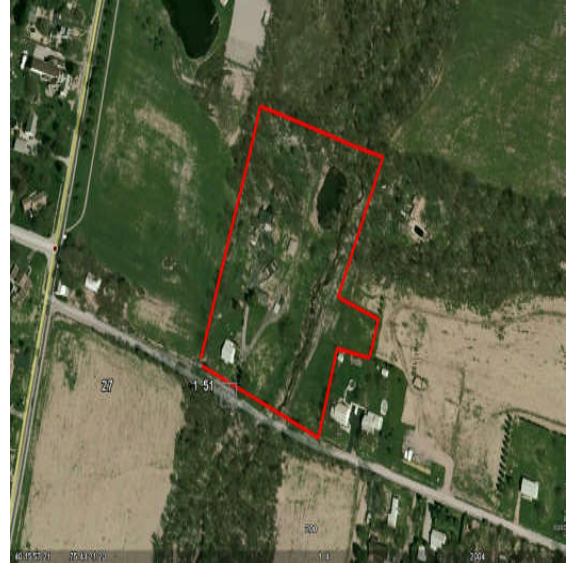
Location : Centrally located
.5 miles from Route 422 in
Douglasville, PA

Property Type: Vacant Land

Lot Size : +/- 6.22 Acres

Current Zoning : LI/O
Light Industrial / Office

Real Estate Taxes : \$5,333/2008



6.22 acres zoned LI/O near site of new Reading Hospital Surgical Center. This site is ideal for medical offices and other ancillary uses associated with new hospital/surgical site. Current zoning permits the following uses AS OF RIGHT: Business, Professional & Governmental offices; Manufacturing; Municipal Uses; Retail Business Establishments; Warehouse Facilities, Wholesale & Distribution Facilities. By Conditional Use the following is permitted: Industrial Park & Research Facilities. Special Exception Uses include Junk Yards, Metal Processing Facilities, Truck Distribution Center.

Joe Leone
Associate Broker
Cell 610-551-5830
Office 610-792-5900
jfleone@hotmail.com
www.ListWithSanta.com



Asking Price : \$599,000