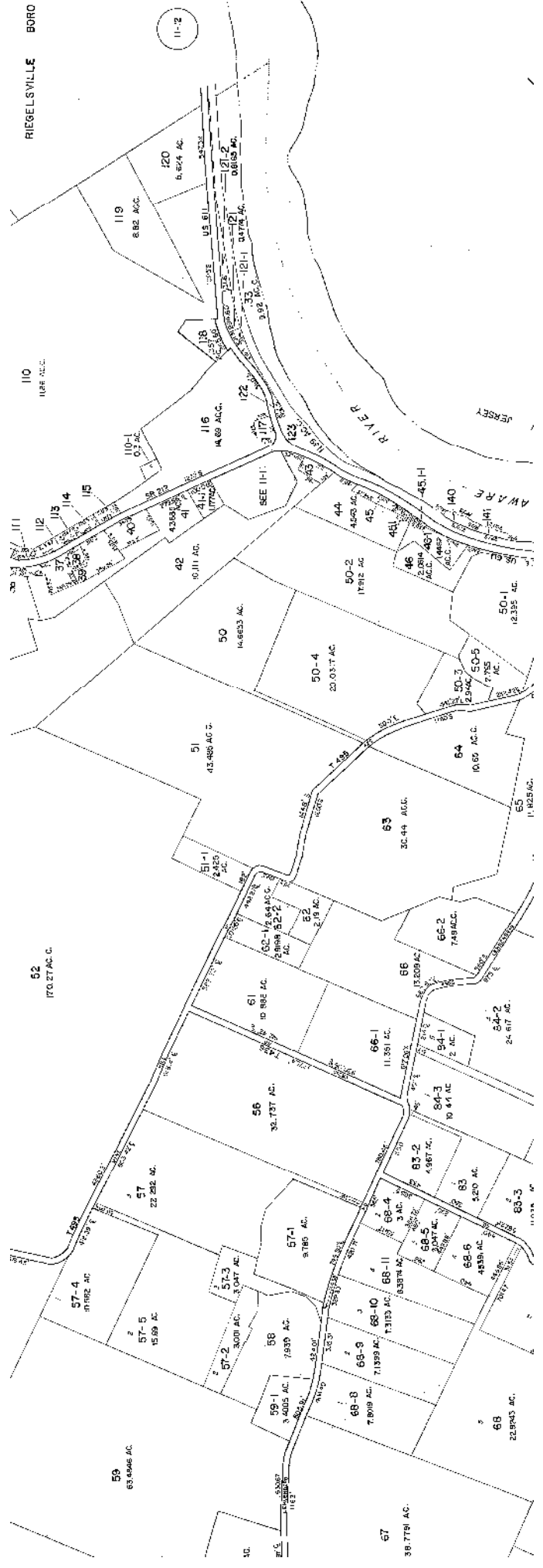


RIEGELSVILLE BORO



RIEGELSVILLE BORO

59
63.4546 AC.

57
38.7781 AC.

68
22.9443 AC.

66
7.8019 AC.

65-9
7.1359 AC.

68-10
1.3153 AC.

68-4
9.3378 AC.

68-5
3.4017 AC.

68-6
4.937 AC.

68-7
3.20 AC.

68-8
4.937 AC.

68-9
3.4017 AC.

68-10
1.3153 AC.

68-11
9.3378 AC.

68-12
3.4017 AC.

68-13
4.937 AC.

68-14
3.20 AC.

68-15
4.937 AC.

68-16
3.4017 AC.

68-17
1.3153 AC.

68-18
9.3378 AC.

68-19
3.4017 AC.

68-20
4.937 AC.

68-21
3.20 AC.

68-22
4.937 AC.

68-23
3.4017 AC.

68-24
1.3153 AC.

68-25
9.3378 AC.

68-26
3.4017 AC.

68-27
4.937 AC.

68-28
3.20 AC.

68-29
4.937 AC.

68-30
3.4017 AC.

68-31
1.3153 AC.

68-32
9.3378 AC.

68-33
3.4017 AC.

68-34
4.937 AC.

68-35
3.20 AC.

68-36
4.937 AC.

68-37
3.4017 AC.

68-38
1.3153 AC.

68-39
9.3378 AC.

68-40
3.4017 AC.

68-41
4.937 AC.

68-42
3.20 AC.

68-43
4.937 AC.

68-44
3.4017 AC.

68-45
1.3153 AC.

68-46
9.3378 AC.

68-47
3.4017 AC.

68-48
4.937 AC.

68-49
3.20 AC.

68-50
4.937 AC.

68-51
3.4017 AC.

68-52
1.3153 AC.

68-53
9.3378 AC.

68-54
3.4017 AC.

68-55
4.937 AC.

68-56
3.20 AC.

68-57
4.937 AC.

68-58
3.4017 AC.

68-59
1.3153 AC.

68-60
9.3378 AC.

68-61
3.4017 AC.

68-62
4.937 AC.

68-63
3.20 AC.

68-64
4.937 AC.

68-65
3.4017 AC.

68-66
1.3153 AC.

68-67
9.3378 AC.

68-68
3.4017 AC.

68-69
4.937 AC.

68-70
3.20 AC.

68-71
4.937 AC.

68-72
3.4017 AC.

68-73
1.3153 AC.

68-74
9.3378 AC.

68-75
3.4017 AC.

68-76
4.937 AC.

68-77
3.20 AC.

68-78
4.937 AC.

68-79
3.4017 AC.

68-80
1.3153 AC.

68-81
9.3378 AC.

68-82
3.4017 AC.

68-83
4.937 AC.

68-84
3.20 AC.

68-85
4.937 AC.

68-86
3.4017 AC.

68-87
1.3153 AC.

68-88
9.3378 AC.

68-89
3.4017 AC.

68-90
4.937 AC.

68-91
3.20 AC.

68-92
4.937 AC.

68-93
3.4017 AC.

68-94
1.3153 AC.

68-95
9.3378 AC.

68-96
3.4017 AC.

68-97
4.937 AC.

68-98
3.20 AC.

68-99
4.937 AC.

68-100
3.4017 AC.

68-101
1.3153 AC.