



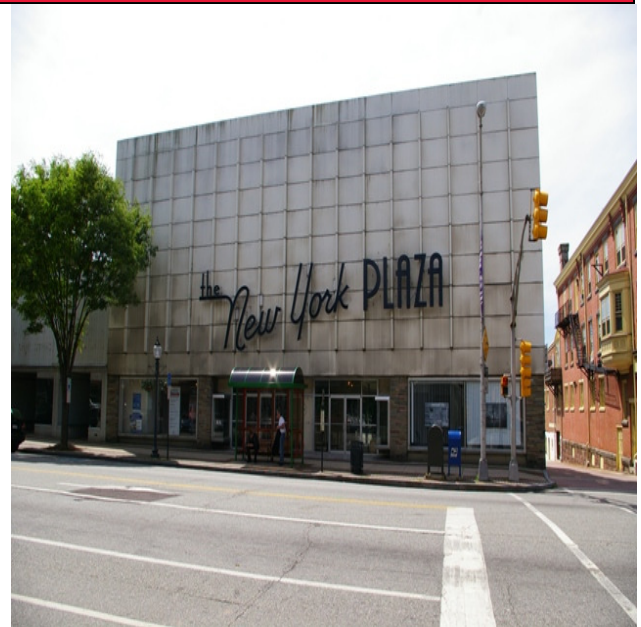
For Lease
New York Plaza Building
238 E High Street
Pottstown, PA

KW Commercial
542 N Lewis Rd
Limerick PA 19468
Cell 610-551-5830
Office 484-762-8149

Location : Prime Office / Retail space for Lease in the heart of Historic Downtown Pottstown

Property Type: Prime Office Space & Street Retail

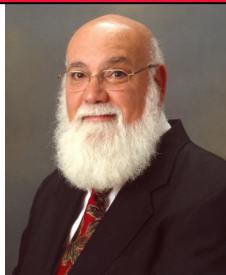
Terms: Full Service Lease



Prime Office / Retail space for Lease in the heart of Historic Downtown Pottstown. Office space from 800 SF up to 27,000sf Full Service leases available. First and Second floors are ground level accessible. . Available amenities include elevator service to all 4 floors, 92 space private paved parking lot, outdoor patios on lower level and 2nd floor level on rear of building. Interior storage space also available at reduced rate Ideal High Street location, Bus stop directly in front of building, fully sprinklered building, handicapped accessible, kitchens and public and private restrooms. Walking distance to shopping, restaurants and other services. Close proximity for office or business requiring access to Hill School, Pottstown Borough Hall, Montgomery County Community College, Philadelphia. or Reading. Immediate occupancy. Easy access to Route 100 and Route 422. Zoned Downtown (Conservation), As of Right Uses include Offices, Restaurants, Trade Schools, Bank & Financial Institutions, Retail & Service Stores, Health & Fitness Center, Hotel & Motel, Institutional & Civic Use. Conditional Uses include Child Care Facility. Ideal site for Art Gallery or "Studio" space.



Joe Leone
Associate Broker
Cell 610-551-5830
Office 484-762-8149
jfleone@hotmail.com
www.ListWithSanta.com



Offered at \$ 12 sf/yr
Full Service Lease